

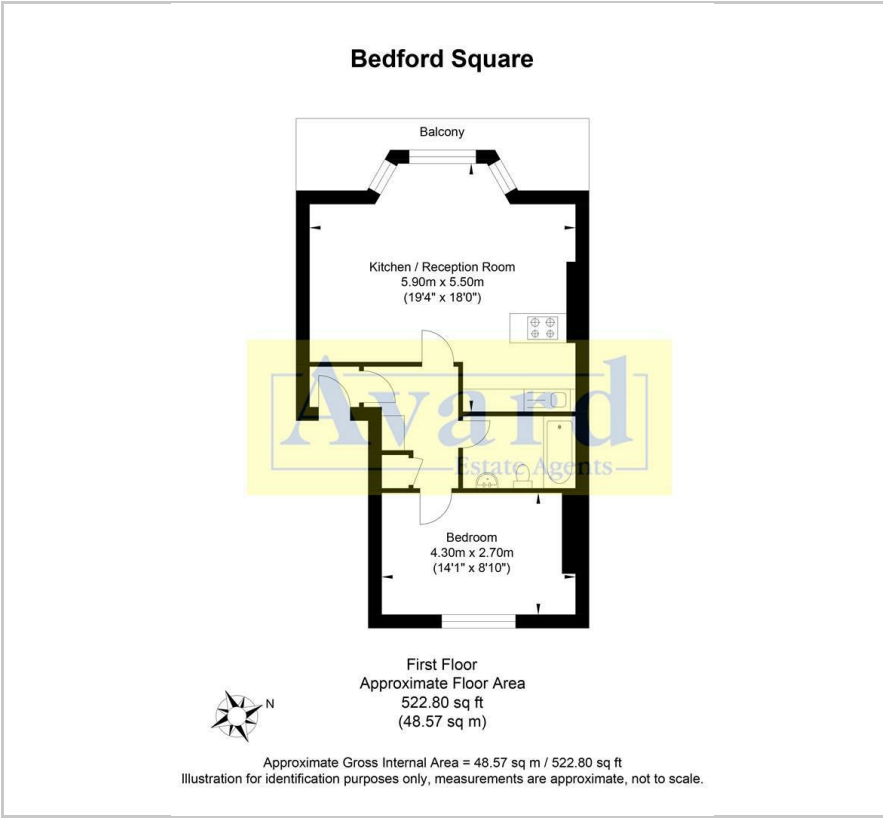
35-36 Bedford Square

, Brighton, BN1 2PL

£1,400 Per month



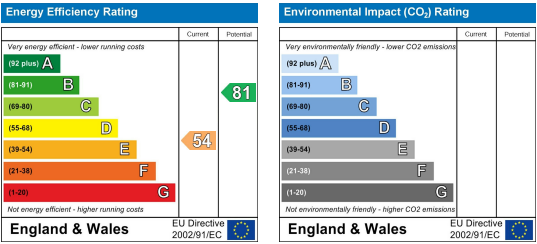
Floor Plan



Area Map



Energy Efficiency Graph



Viewing

Please contact our Avard Estate Agents Office on 01273696000 if you wish to arrange a viewing appointment for this property or require further information.

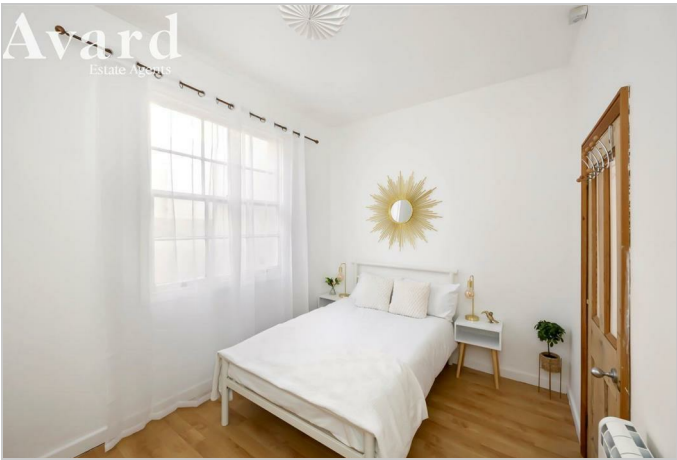


BALCONY WITH SEA AND SQUARE VIEWS

Nestled in the prestigious Bedford Square one of Brighton's finest seafront locations, this exquisite first-floor flat presents an exceptional opportunity for those seeking a stylish and comfortable abode. This one-bedroom apartment has been decorated to the highest standards, reflecting a keen attention to detail throughout.

Upon entering, you are welcomed by a charming hallway that leads to an impressive open-plan living area, seamlessly integrated with a kitchen. The highlight of this space is the stunning westerly aspect, enhanced by a delightful bay window that floods the room with natural light and offers breathtaking views of the square and the sea. The flat also boasts a well-appointed bathroom and a serene bedroom, complemented by a fantastic balcony with sea and square views.

The central location of this apartment places you just moments away from a vibrant selection of shops, restaurants, and the rich cultural scene that Brighton is renowned for. For those who commute, Brighton mainline train station is conveniently situated only 1km away, providing easy access to Gatwick Airport and London.



These particulars, whilst believed to be accurate are set out as a general outline only for guidance and do not constitute any part of an offer or contract. Intending purchasers should not rely on them as statements of representation of fact, but must satisfy themselves by inspection or otherwise as to their accuracy. No person in this firm's employment has the authority to make or give any representation or warranty in respect of the property.